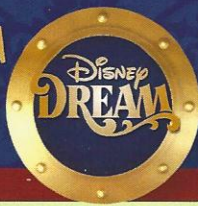


# PERSONAL NAVIGATOR



SATURDAY, DECEMBER 8, 2012

Sunrise: 6:44 a.m. Sunset: 5:16 p.m.

Evening Attire: Optional Dress Up

All Ashore: Approx. 8:30 a.m.

All Aboard: 5:00 p.m.

Gangway: Deck 1, Midship, & Deck 1, Aft

Saturday: Partly Sunny High: 75°F/24°C

Sunday: Partly Sunny High: 73°F/23°C

DISNEY'S CASTAWAY CAY

## Disney's Believe

Genie from Aladdin and many of Disney's most beloved magic makers take a father on a magical journey to show him that anything is possible if you just believe.

WALT DISNEY THEATRE  
Decks 3 & 4, Forward  
6:15 & 8:30 P.M.

Assistance available at the entrance to the Walt Disney Theatre 30 minutes prior to show time.



HAPPY HANUKKAH!

## Disney's Castaway Cay

Reserved exclusively for Guests on Disney Cruise Line Bahamian and Caribbean cruise vacations, Castaway Cay is Disney's private port-of-call paradise. On this island, enjoy tropical leisure activities, such as snorkeling, boating, swimming and sunbathing.

### Friendly Reminders

- Serenity Bay is reserved for Guests 18 and older.
- Your Key To The World Card will need to be used for all transactions on Disney's Castaway Cay except for the Post Office.
- A limited number of all-terrain wheelchairs are available across from Scuttle's Cove.
- For your convenience, beach towels are available as you leave the ship; please return them at the gangway at the end of your day.
- Due to our commitment to the environment, we ask that seashells, coral and other natural treasures be left undisturbed at Disney's Castaway Cay for all to enjoy.

### Debark Talk Broadcast

Your Cruise Director, Natalie, presents important information, including U.S. Customs and Border Protection procedures. Tune in to Channel 5 of your stateroom TV. Please place your luggage outside your stateroom between 8:30 - 10:30 p.m.

Thank you in advance for completing your comment card.

# SEA YA' REAL SOON!

Mickey and some of his Disney friends, invite you to join them in the ship's Atrium. You won't want to miss this very special farewell meet and greet.

Bring your cameras!

10:15 p.m.  
Lobby Atrium,  
Deck 3, Midship

## Don't Miss:

### Run Disney: Castaway Cay 5K

Meet in Evolution (12+), Deck 4, Aft - 8:30 a.m.

Runners meet in Evolution, Deck 4, Aft, at 8:30 a.m.

We will depart the ship at 8:45 a.m., and make our way to the Bike Rentals where the run will begin.

### Crab Races

Castaway Cay, Gazebo 1, (Near Cookies BBQ) - 11:45 a.m.

Castaway Cay, Gazebo 2, (Near Pelican Point Tram Stop) - 12:45 p.m.

Watch some local sea creatures make a break for the finish line.

### Captain's Signing

White Caps, Deck 3, Forward - 7:15 p.m.

Come and have your Disney Dream Merchandise signed by the Master of the Disney Dream, Captain Guus.

### 80's Music Challenge

Evolution (18+), Deck 4, Aft - 10:30 p.m.

Join your Club Host, David, and your Cruise Staff team as they test your 80's music knowledge in this interactive challenge.



### Visit The Future Cruise Desk Early Today

Please visit the Future Cruise Desk, Deck 4, Midship, as early as possible today. The last day of the cruise tends to get busy in the evening, and we want to be sure you have the opportunity to save 10% on your next cruise, receive up to a \$200 onboard credit, and pay a reduced deposit! Tune to Channel 8 for details.

## DINNER MENU

Animator's Palate: Pacific Rim Crusine  
Enchanted Garden: Continental Market  
Royal Palace: French Dinner

## DRINK OF THE DAY

Bahama Mama (Alcoholic)  
Coco Bali (Non Alcoholic)

## IMPORTANT NUMBERS

Fire/Security: 7-3001  
Medical Emergency: 7-3000  
Health Center: 7-1923

# FAMILY ACTIVITY HIGHLIGHTS

# ADULT ACTIVITY HIGHLIGHTS



## RUN DISNEY: CASTAWAY CAY 5K

*Meet in Evolution (12+), Deck 4, Aft - 8:30 a.m.*  
Runners meet in Evolution, Deck 4, Aft, at 8:30 a.m. We will depart the ship at 8:45 a.m., and make our way to the Bike Rentals where the run will begin. Come cheer on your friends and family as they cross the finish line!

## ISLAND POWER WALK

*Meet at the Post Office, Castaway Cay - 9:30 a.m.*  
Join your Cruise Staff for a brisk walk around the island. Meet outside, by the Post Office. Meet time is 9:30 a.m. Walk leaves promptly at 9:45 a.m.

## CRAB RACES

*Castaway Cay, Gazebo 1, (Near Cookies BBQ) - 11:45 a.m.*  
*Castaway Cay, Gazebo 2, (Near Pelican Point Tram Stop) - 12:45 p.m.*  
Watch some local sea creatures make a break for the finish line.

## FAMILY WHALE DIG

*Monstro Point, Castaway Cay - 1:00 p.m.*  
Our island paleontologist leads us in the excavation of a giant whale skeleton and other fossilized treasures!

## FAMILY SUPERSTAR KARAOKE

*D Lounge, Deck 4, Midship - 10:45 p.m.*  
Calling all singing superstars! Join your Cruise Staff in D Lounge and sing along to your favorite song - fun for everyone!

## FAMILY DANCE PARTY

*Evolution, Deck 4, Aft - 7:30 p.m.*  
Grab your dancing shoes and hit the dance floor as DJ Marius spins the tunes.

## OFFICER PIN TRADING

*Preludes, Deck 3, Forward - 7:30 p.m.*  
Your chance to come and trade pins with the officers of the Disney Dream.

## DISNEY TRIVIA

*D Lounge, Deck 4, Midship - 7:30 p.m.*  
Join your Cruise Staff as they put your Disney knowledge to the test!

## FAMILY DREAM QUEST

*D Lounge, Deck 4, Midship - 9:45 p.m.*  
Enjoy the wildest and wackiest scavenger team event on the seven seas!

## SENSES SPA SEMINARS

*Body Sculpt Boot Camp (Fee Applies) - Goofy's Sports Deck, 7:30 a.m.*  
*Wake Up & Stretch - Senses Fitness Center, 8:00 a.m.*  
*Yoga on the Beach - Serenity Bay, 10:30 a.m.*  
*Seminar: Secrets to a Flatter Stomach - Senses Spa & Salon, 3:00 p.m.*  
*Good Feet Seminar: Relieving Back Pain - Senses Spa, 4:00 p.m.*  
*Acupuncture Seminar: The Power of Chinese Herbs - Senses Spa & Salon, 4:30 p.m.*  
*Fab Abs - Senses Fitness Center, 5:00 p.m.*



CLUB  
18\*21

## BASKETBALL CHALLENGE

*In Da Shade Games, Castaway Cay, 1:00 p.m.*

## MINI GOLF

*Goofy's Sports Deck, Deck 13, Aft, 5:00 p.m.*

## FAREWELL

*Evolution, Deck 4, Aft, 10:00 p.m.*

## MAKING OF THE DREAM

*Evolution, Deck 4, Aft - 3:00 p.m.*  
Explore the origins of Disney Cruise Line — and the latest and greatest innovations conjured especially for the Disney Dream, in this fascinating and entertaining behind-the-scenes program.

## DISNEY VACATION CLUB® GROUP PRESENTATION

*Evolution, Deck 4, Aft - 4:30 p.m.*  
Want to learn more about taking magical vacations year after year? Stop by our interactive group presentation to find out more information from a Disney Vacation Club representative.

## 8TRAX (70'S REMIX) FOLLOWED BY GUEST DJ CHRISTIAN GAMA

*Evolution, Deck 4, Aft - 11:00 p.m.*  
Join your Club Host, David, and your Cruise Staff for a 70's disco fever epidemic. With a special appearance by the Evolution Dancers.



# BINGO

## \$5,000 FINAL MEGA JACKPOT BINGO

Join us for four cash prize games. If you cover your card in 46 numbers or less on the final game, \$5,000 could be yours! If not, we will still be playing for the HIGHEST cash prize of the cruise.

*D Lounge  
Deck 4, Midship  
Pre Sales - 3:45 p.m.  
Game Starts - 4:00 p.m.*

# YOUTH ACTIVITIES HIGHLIGHTS

## DINE & PLAY

A convenience for families dining at 8:15 p.m., our Youth Activities Counselors will be available at 9:15 p.m. at the entrance of Royal Palace, Enchanted Garden and Animator's Palate dining rooms to bring registered children to join the fun in the Youth Activity areas.



*Deck 5, Midship (7-1440)* 4:00 p.m. - 12:00 Mid  
(3 - 12 years old)

## CAMP ROCKIN' OUT

7:00 p.m.

Discover your inner Jonas Brother and relive the fun of the Camp Rock films. Singing, dancing, tents - it's more fun than you ever thought was possible!

## LITTLE EINSTEINS

8:45 p.m.

Your junior cruisers will have the time of their lives with this program inspired by their favorite show with fun activities guaranteed to make them feel like a little genius!



*Deck 5, Midship (7-1445)* 5:00 p.m. - 12:00 Mid  
(3 - 12 years old)

## STITCH'S ADVENTURE SQUAD

7:45 p.m.

Stitch, everyone's favorite alien, is making an appearance to share some of his mischievous games and activities.

## SUPER SLOPPY SCIENCE

10:30 p.m.

Join Professor Make-O-Mess in some of the most extreme experiments you will ever see in the world of Super Sloppy Science!



*Deck 13, Midship (7-9743)* 4:00 p.m. - 12:00 Mid  
(11 - 14 years old)

## MAGIC SHOW

6:15 p.m.

Put some magic and wonder in your Dream vacation. Say, "Abracadabra!" and fun is sure to appear!

## FAREWELL DANCE PARTY

11:00 p.m.

Come say goodbye to your new found friends, and dance the night away!



*Entrance on Deck 4, Forward (7-9417)*  
5:00 p.m. - 1:00 a.m.  
(14 - 17 years old)

## PUMP IT UP

9:00 p.m.

Join us for an exclusive teen only workout in the Senses Fitness Center! Pump It Up is offered daily from 9:00 p.m. - 11:00 p.m. Please check in at Vibe if you would like to attend!

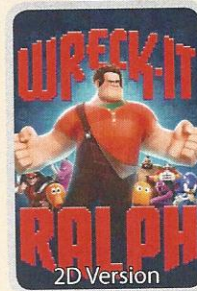
## BRING IT!

10:15 p.m.

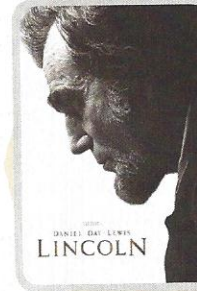
Join your Vibe counselors as we see who reigns supreme in the ultimate battle of the sexes.

# BUENA VISTA THEATRE

## Today's Movies



8:30 a.m. - **PG**  
& 12:00 p.m.  
Run Time: 1 hr 51 min  
Rated: PG



2:30 p.m. - **PG**  
& 10:30 p.m.  
Run Time: 2 hr 32 min  
Rated: PG-13

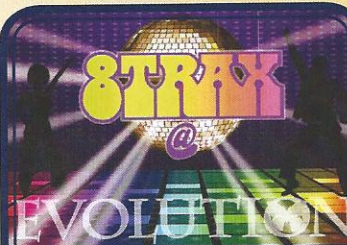


5:45 p.m. & 8:30 p.m.  
Run Time: 1 hr 31 min  
Rated: PG



Bring the entire family and test your Disney knowledge in this interactive game show, Family Fusion.

*D Lounge,  
Deck 4, Midship  
10:15 p.m.*



## 8 TRAX REMIX

Join your Club Host, David, and your Cruise Staff for a 70's disco fever epidemic, with an appearance by the Evolution Dancers.

*Evolution (18+),  
Deck 4, Aft  
11:00 p.m.*

## YOUTH ACTIVITIES OPEN HOUSE

Open House is an opportunity for all to come and participate in a variety of exciting activities and free time in the Oceaneer Club, Lab, Edge & Vibe throughout the cruise. During these times secured programming will still be offered in the other venue for those looking to check their children into care.

# MORE TO ENJOY WHILE ONBOARD

## EXPRESS WALK-OFF

Guests now have the option to take your luggage off the ship at your leisure once the ship has been cleared by the local authorities. You do not need to wait for your luggage to enter the terminal and there is no need to claim it inside the terminal building. Please note that no assistance with luggage is provided for this option.

## DISNEY VACATION CLUB® GROUP PREVIEW

Want to learn more about taking magical vacations year after year? Please see a Disney Vacation Club representative on Deck 4, Midship, or call 7-2805 from your stateroom phone for more information about our interactive group presentation.

## PROTECT YOUR PURCHASES

Don't forget to activate your 60 day buyer's guarantee form for your purchases in Nassau. It's free and confidential. Pick one up at the Shopping Desk, Deck 4, Midship.



## SALON TASTER SPECIAL

Choose from scalp massage, European facial, hand treatment, sunglow make-over, hair treatment, eye-collagen treatment, foot & ankle massage and neck & shoulder massage.

Three for \$99, five for \$119, and eight for \$139.

Cabana full body Swedish Island massages for \$99 at Serenity bay, contact 7-1465 for appointments!

## DISNEY CRUISE LINE SOUVENIR JEWELRY ON THE DREAM

An exclusive line of merchandise created just for Disney Cruise Line. Designed to provide you with an elegant way of bringing home a little piece of your magical experience onboard the Disney Dream. Necklaces and earrings with our wave logo will let all of your friends know that you have sailed with the best. Keep the memories with you wherever you go.

**WHITECAPS**  
Deck 3, Forward

## Shutters GET THE PICTURE

Grand Staircase – Groups accommodated

**Lobby Atrium, Deck 3, Midship**  
5:00 p.m. – 6:30 p.m.

Create a personal storybook of your cruise to share with family and friends. Photobook orders close at 10:00 p.m.

\*Please note that photos are available for viewing on our interactive photo kiosks approximately three hours after being taken and are only available for purchase during this cruise.



Welcome to Disney's Island Paradise Castaway Cay. Today is the day to relax in an inner tube, snorkel in the Caribbean blue, get up-close and personal to real life stingrays or fly high in the sky on a parasail excursion during a breathtaking aerial adventure.

Visit Marge's Barges or one of the rental locations and our friendly team will assist in making any last minute bookings.

## PORT ADVENTURES MEETING TIMES AND LOCATIONS

As per ticket	Castaway Ray's Stingray Adventure	Gil's Fins and Boats
As per ticket	Castaway Cay Bottom Fishing	Marge's Barges
As per ticket	Nature Walk and Kayaking	Marge's Barges
As per ticket	Parasailing	Marge's Barges
9:00 a.m.	Teen Wild Side	Vibe
As per ticket	Single & Double Watercraft	Boat Beach

## CASTAWAY CAY ISLAND RENTALS

Bicycles	9:00 a.m. – 4:00 p.m.	Bike Rentals
Boats	9:00 a.m. – 4:00 p.m.	Boat Beach
Snorkeling Gear	9:00 a.m. – 3:30 p.m.	Gil's Fins and Boats / Flippers and Floats
Float	9:00 a.m. – 3:30 p.m.	Gil's Fins and Boats / Flippers and Floats
Getaway Package	9:00 a.m. – 3:30 p.m.	Gil's Fins and Boats / Flippers and Floats

Reservations can be made on the island at each rental location. Castaway Ray's walk up reservations can be made at Gil's Fins and Boats on Family Beach.

## SHOPPING

### CAPTAIN'S SIGNING

Come to White Caps at 7:15 p.m. and have your Disney Dream merchandise signed by the Master of the Disney Dream, Captain Guus. Stunning replica ships are available in Sea Treasures, Deck 3, Forward.

### CASTAWAY CAY TREASURES

She Sells Seashells... and Everything Else & Buy the Seashore are your island memory destinations for apparel, plush, postcards, swimwear and, well, everything else! Doing the Castaway Cay 5K? Commemorate your success with T-shirts available exclusively at Buy the Seashore.

### GOING ONCE, GOING TWICE, YOURS!

The silent auction closes this evening at 6:00 p.m. and you want to make sure your bid is in on your favorite piece. Be the proud owner of fantastic Disney art that will always remind you of your time with us onboard the Disney Dream. Explore all that the Vista Gallery has to offer with beautiful paintings of your favorite characters and films. Discounted shipping available on two or more pieces of art. Vista Gallery, Deck 4, Midship.

### SWAROVSKI COLLECTIONS ONBOARD THE DREAM

Whitecaps is the destination to visit to see all things that bling! Swarovski Jewelry - Rings, Necklaces and Earrings, also sparkling pens available. All at great Duty Free Prices.

### LAST CHANCE OPPORTUNITIES!

Available on purchases in the merchandise locations onboard, while supplies last. With every \$30.00 spent, you can purchase a Disney Cruise Line watch for \$16.95.

### TAX AND DUTY FREE

Tax and duty free shopping right here onboard! Buy liquor onboard and we will package it safely for your journey home. White Caps, Deck 3, Forward.

Due to port regulations, when the ship is docked, the stores will remain closed.

DD 182 12-08-2012 ©DISNEY

## IMPORTANT INFORMATION

### Security Notice

All Guests (including children) who wish to disembark the ship are required to present their Key to the World card at the gangway. A photo ID is also required for those Guests who are 18 years of age or older. Guests under the age of 18 are required to have a Parent, Guardian or other responsible adult sign an authorization form at the time it is given out if they wish to go ashore unaccompanied. Authorization forms are available at the gangways and Guest Services.

### Please Note:

Please remember to use plenty of sunscreen and mosquito repellent when venturing ashore.

### Cold and Flu Reminder

Please wash hands frequently and thoroughly; particularly before meals. Contact the Health Center by dialing 7-1923, should anyone in your party become ill.

### Corridor Quiet Hours

As a courtesy to all our Guests, please recognize quiet hallway hours from 10:00 p.m. til 8:00 a.m.

### Inclement Weather

For the safety of all Guests, outdoor events may be changed due to unforeseen weather conditions.

### Environmental Message

With Disney's commitment to the Environment, please refrain from throwing anything over the Ship's side. Thank you!

### No Reserved Seats Policy

As a courtesy to all our Guests, we kindly advise that the saving of seats is not permitted in the Walt Disney Theatre, and the saving of the sun loungers is not permitted on Deck 11, 12, and 13. Items left unattended will be returned to lost and found at Guest Services, Deck 3 Midship.

### Smoking

For the comfort of our guests the following areas are designated as Smoking areas:

- Deck 13, Forward, port side, by "Currents"
- Deck 12, Aft, port side outdoor area that is accessible through the Meridian Lounge
- Deck 4, Aft, port side from 6:00 p.m. to 6:00 a.m. only (all of Deck 4 is no smoking from 6:00 a.m. to 6:00 p.m.)
- Smoking is permitted on stateroom verandahs. Smoking is prohibited inside all guest staterooms. Guests found smoking in their staterooms will be charged a \$250 stateroom recovery fee.

### Walt Disney Theatre

Theatrical performances may use artificial fog, strobe lights, pyrotechnics and other special effects. For the safety of our performers and the comfort of those around you, the use of any photography, video recording device or any electronic equipment is prohibited.

### Verandah Safety

Please do not leave any combustible materials on your balcony when not present in your stateroom for safety reasons.

DD/NB/3D/182/12.02.2012/MJM/©DISNEY

Morning	8:30	8:45	9:00	9:15	9:30	9:45	10:00	10:15	10:30	10:45	11:00	11:15	11:30	11:45	12:00	12:15	12:30	12:45	1:00	1:15	1:30	
FUNNEL VISION	The Sorcerer's Apprentice (G) Funnel Vision							Mary Poppins (G) Funnel Vision							Virtual Tour							
MOVIES	BUENA VISTA THEATRE  RATED: PG - 2D VERSION											BUENA VISTA THEATRE  RATED: PG - 2D VERSION  >1:51 p.m.										
CHARACTER	Donald Gangway	Jack Sparrow Island Pathway	Mickey Scuttles	Daisy Gangway	Minnie Scuttles	Hook & Snee Post Office	Mickey Rustmore	Daisy Gangway	Goofy Scuttles	Character Dance Party Island Gazebo 1												
	Santa Claus Lobby Atrium			Chip & Dale Post Office	Goofy Rustmore	Jack Sparrow Pelican Point			Chip & Dale Post Office	Minnie Rustmore												
FUN FOR ALL AGES	(12+) Meet in Evolution (Departs at 8:45 a.m.)			Island Power Walk/Stroller Fitness Meet at the Post Office at 9:30 a.m., Departs at 9:45 a.m.						Crab Races Gazebo 1			Character Dance Party Island Gazebo 1			Crab Races Gazebo 2						
							DJ Marius Spins on the Island Gazebo 1			Basketball Free Throw In Da Shade Games			Tony Delaney on the Guitar Gazebo 1-Live Music			Family Whale Dig Monstro Point						
ADULTS	Friends of Bill W. Outlook						Yoga on the Beach Serenity Bay			Club 18*21 Volleyball Sports Beach			Basketball Free Throw In Da Shade Games			18*21 Basketball In Da Shade Games			Two for One Mojitos Heads Up Bar			
VIBE	Meet for Wildside at Vibe						Teen Hideout Opens						Lunch Cookies Too						Lunch Cookies Too			
EDGE							Sand Soccer Sports Beach			Basketball Runway			Lunch Cookies Too			Pelican Plunge						
SCUTTLES COVE	Water Relays			Sebastian's Sea Search			Treasure Hunt			Lunch			Vacation Crafts									
	Soccer			Whale Dig			Whale Dig			GaGa Ball												
OCEANEER LAB	Youth Activities Open House																					
OCEANEER CLUB																						

Symbol for activities that will be repeated during the cruise

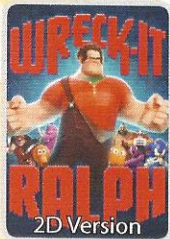
Afternoon	1:45	2:00	2:15	2:30	2:45	3:00	3:15	3:30	3:45	4:00	4:15	4:30	4:45	5:00	5:15	5:30	5:45	6:00	6:15	6:30	6:45		
FUNNEL VISION	Aladdin (G) Funnel Vision							The Jungle Book (G) Funnel Vision							Fantasia 2000 (G) Funnel Vision								
MOVIES	BUENA VISTA THEATRE LINCOLN  Rated: PG-13											Frankenweenie (PG)  Buena Vista Theatre >7:16 p.m.											
CHARACTER	Lilo & Stitch Gangway			Hook & Snee Minnie Dk4, Balcony			Mickey Pluto Dk 4, Balcony			Mickey Donald Dk 4, Balcony			Chip & Dale Dk 4, Balcony										
	Princess Gathering Lobby Atrium						Minnie Mouse Preludes																
FUN FOR ALL AGES	Sports Simulator Available for Bookings Sports Deck			Animation: Creating a Character D Lounge			\$5,000 FINAL Mega Jackpot						Hanukkah Service D Lounge			Walt Disney Theatre							
	Island Guitar: Tony Delaney Gazebo 1 - Live Music			Youth Activities Open House Edge			Bingo Pre Sales			The Dreamers LIVE Lobby Atrium - Live Music													
	NCAA Basketball 687 Pub (Subject to satellite availability & blackouts)			DJ Marius Spins on the Island Gazebo 1																			
ADULTS	Making of the Dream Evolution						Good Feet Seminar Senses Spa & Salon			18*21 Mini Golf Goofy's Sports Deck													
	Art of the Theme Show Tour Meet at Meridian						Disney Vacation Club Presentation Evolution																
VIBE	Youth Activities Open House						Sports Deck			That's Hilarious													
EDGE	In Da Shade Games Pavillion			Invade Teen Hide Out till 4:00 p.m.			Tween Pool Party in Vibe			Super Sloppy Science Sports Deck			Magic Show										
SCUTTLES COVE	Caribbean Beach Party			Capture the Flag			Scuttles Cove closes 4:00 p.m.																
OCEANEER LAB	Youth Activities Open House																						
OCEANEER CLUB	Open for Secured Programming											Magic Playfloor			Dinner			Piston Cup Challenge					
												Dinner											

Fold along the dotted lines and take me with you so you don't miss any of the fun!

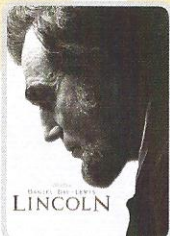
Evening	7:00	7:15	7:30	7:45	8:00	8:15	8:30	8:45	9:00	9:15	9:30	9:45	10:00	10:15	10:30	10:45	1:00	1:15	1:30	1:45	12:00	
FUNNEL VISION	Cinderella (G) Funnel Vision							The Princess & the Frog (G) Funnel Vision							Enchanted (PG) Funnel Vision							
MOVIES	Frankenweenie (PG)  Buena Vista Theatre											BUENA VISTA THEATRE LINCOLN  Rated: PG-13 >1:02 a.m.										
CHARACTER	Mickey Mouse Dk 4, Balcony			Disney Princesses D Lounge			Walt Disney Theatre			Family Fusion D Lounge			Walt Disney Theatre									
	Captain's Signing White Caps			The Dreamers LIVE Lobby Atrium - Live Music			Family Fusion D Lounge			Family Fusion D Lounge			Family Superstar Karaoke D Lounge									
FUN FOR ALL AGES	Officer Pin Trading Preludes			Disney Trivia D Lounge			Walt Disney Theatre			The Dreamers LIVE Lobby Atrium - Live Music			Rob Sanders on the Keys Lobby Atrium - Live Music									
ADULTS	NCAA Basketball 687 Pub (Subject to satellite availability & blackouts)						18*21 Farewell Evolution			80's Music Challenge Evolution			8 Trax Remix feat Guest DJ Christian Gama & the Evolution Dancers Evolution									
	EnharmoniQ LIVE District Lounge - Live Music			Rob Sanders on the Keys District Lounge - Live Music			EnharmoniQ LIVE District Lounge - Live Music			EnharmoniQ LIVE District Lounge - Live Music			EnharmoniQ LIVE District Lounge - Live Music									
VIBE	Animation						Pump It Up/Smoothies			Bring It!			Slideshow			Info Swap						
EDGE							Ghost Voyagers			Slideshow			InfoSwap Farewell			Dance Party						
OCEANEER LAB	POTC: Tides of Fortune			Stitch's Adventure Squad			Get The Hook			Anyone Can Cook			Super Sloppy Science			Magic Playfloor						
OCEANEER CLUB	Camp Rocking Out			Magic Playfloor			Little Einsteins			Animation Antics			Tinker Bell's Talent Show									

IN THE SPOTLIGHT SERIES  
SOLVE IT! SERIES  
JUMP UP! SERIES  
CREATE & INVENT SERIES  
OPEN HOUSE  
CLUBHOUSE SERIES  
STORYBOOK SERIES

# BUENA VISTA THEATRE



8:30 a.m. - **CC**  
& 12:00 p.m.  
Run Time: 1 hr 51 min  
Rated: PG



2:30 p.m. - **CC**  
& 10:30 p.m.  
Run Time: 2 hr 32 min  
Rated: PG-13



5:45 p.m.  
& 8:30 p.m.  
Run Time: 1 hr 31 min  
Rated: PG

## Character Appearances

### DONALD DUCK

Gangway  
8:45 a.m. & 9:45 a.m.  
Lobby Atrium - 5:30 p.m.

### SANTA CLAUS

Lobby Atrium - 9:00 a.m.

### TINKER BELL

Lobby Atrium - 9:00 a.m.

### JACK SPARROW

Island Pathway - 9:00 a.m.  
Pelican Point - 10:15 a.m.

### HOOK & SMEE

Post Office  
9:00 a.m. & 10:00 a.m.  
Gangway - 3:30 p.m.

### MICKEY MOUSE

Scuttle's Cove - 9:15 a.m.  
Mt. Rustmore - 10:15 a.m.  
Deck 4, Balcony  
4:45 p.m. & 7:30 p.m.

### PLUTO

Mt. Rustmore - 9:15 a.m.  
Scuttle's Cove - 10:15 a.m.  
Lobby Atrium - 5:00 p.m.

### DAISY DUCK

Gangway  
9:30 a.m. & 10:30 a.m.

### CHIP & DALE

Post Office  
9:30 a.m. & 10:30 a.m.  
Deck 4, Balcony - 5:45 p.m.

### GOOFOY

Mt. Rustmore - 9:45 a.m.  
Scuttle's Cove - 10:45 a.m.

### MINNIE MOUSE

Scuttle's Cove - 9:45 a.m.  
Mt. Rustmore - 10:45 a.m.  
Deck 4, Balcony - 3:45 p.m.  
Preludes - 5:15 p.m.  
Lobby Atrium - 7:30 p.m.

### LILO & STITCH

Gangway  
10:15 a.m. & 3:00 p.m.

### CHARACTER DANCE PARTY

Island Gazebo 1 - 12:15 p.m.

### PRINCESS GATHERING

Lobby Atrium - 3:30 p.m.

### DISNEY PRINCESSES

D Lounge - 7:30 p.m.

Don't forget your Camera to capture those Magical Moments!  
For details of daily Disney character appearances, refer to the character line in your Navigator Grid.

## YOUTH ACTIVITIES THEMED EXPERIENCES

**CLUBHOUSE SERIES**  
focuses on movement and features content which appeals to younger children.

**STORYBOOK SERIES**  
is designed with a strong connection to the Disney classic stories.

**JUMP UP! SERIES**  
includes large ground games & movement-oriented activities.

**CREATE & INVENT SERIES**  
will have a tactile focus allowing children to create and admire their work.

### OPEN HOUSE

activities for families, adults and children of all ages to enjoy together.

**IN THE SPOTLIGHT SERIES**  
focuses on children's stage presence with lots of activities and enthusiasm.

**SOLVE IT! SERIES**  
are less active, but will challenge children with problem/solutions based activities.

### GOOFOY'S SPORTS Digital Simulators

**Sports Simulator**  
(Basketball, Baseball, Hockey, or Soccer)  
\$12 / half hr, \$20 / hr

**Golf Simulator**  
\$25 / half hr, \$45 / hr

Reservations can be made at the Port Adventures Desk, Deck 5, Midship or at the Simulators, Deck 13, Aft

## SHIP DIRECTORY

### YOUTH ACTIVITIES

DISNEY'S OCEANEER CLUB	DECK 5, MID	4:00 P.M. - 12:00 MID.
DISNEY'S OCEANEER LAB	DECK 5, MID	5:00 P.M. - 12:00 MID.
EDGE	DECK 13, MID	4:00 P.M. - 12:00 MID.
VIBE	DECK 4, FWD	5:00 P.M. - 1:00 A.M.
IT'S A SMALL WORLD NURSERY	DECK 5, MID	9:00 A.M. - 12:00 MID.

### RECREATION

AQUADUCK	DECK 12, MID	9:00 A.M. - 11:00 P.M.
DONALD'S POOL	DECK 11, MID	6:00 A.M. - 12:00 MID.
GOLF/SPORTS SIMULATOR	DECK 13, AFT	1:00 P.M. - 6:00 P.M.
GOOFOY & MAX'S MINI GOLF	DECK 13, AFT	8:00 A.M. - 10:00 P.M.
GOOFOY'S SPORTS DECK	DECK 13, AFT	11:30 P.M. - 6:00 P.M.
MARGE'S BARGES	CASTAWAY CAY	9:00 A.M. - 3:30 P.M.
MICKEY'S POOL	DECK 11, MID	6:00 A.M. - 12:00 MID.
MICKEY'S SLIDE	DECK 11, MID	10:00 A.M. - 6:00 P.M.
MIDSHIP DETECTIVE AGENCY	DECK 5, MID	8:00 A.M. - 11:00 P.M.
NEMO'S REEF	DECK 11, MID	10:00 A.M. - 6:00 P.M.
QUIET COVE POOL	DECK 11, FWD	6:00 A.M. - 12:00 MID.
SENSES FITNESS CENTER	DECK 11, FWD	6:00 A.M. - 10:00 P.M.

### GENERAL INFORMATION

ARR-CADE	DECK 11, AFT	24 HOURS
DISNEY VACATION CLUB	DECK 4, MID	6:00 P.M. - 10:00 P.M.
FUTURE CRUISE SALES DESK	DECK 4, MID	8:00 A.M. - 10:00 A.M. 3:00 P.M. - 6:00 P.M. 7:00 P.M. - 10:30 P.M.
GUEST SERVICES	DECK 3, MID	24 HOURS
HAIR BRAIDING	DECK 11, MID	5:30 P.M. - 10:00 P.M.
MEDICAL HEALTH CENTER	DECK 1, FWD	9:30 A.M. - 11:00 A.M. 4:30 P.M. - 7:00 P.M.
PRELUDES	DECK 3, FWD	5:45 P.M. - 6:30 P.M. 8:00 P.M. - 8:45 P.M.
SENSES SPA AND SALON	DECK 11, FWD	8:00 A.M. - 10:00 P.M.
SHUTTERS PHOTO GALLERY	DECK 4, MID	5:00 P.M. - 11:00 P.M.

### SHOPPING

MICKEY'S MAINSAIL	DECK 3, FWD	5:30 P.M. - 11:30 P.M.
SEA TREASURES	DECK 3, FWD	5:30 P.M. - 11:30 P.M.
WHITE CAPS	DECK 3, FWD	5:30 P.M. - 11:30 P.M.
VISTA GALLERY	DECK 4, MID	6:00 P.M. - 11:00 P.M.
WHOZITS & WHATZITS	DECK 11, MID	6:45 P.M. - 10:00 P.M.

DUE TO PORT REGULATIONS, WHEN THE SHIP IS DOCKED, THE STORES MUST REMAIN CLOSED.

### DINNER MENU

Animator's Palate: Pacific Rim Cuisine  
Enchanted Garden: Continental Market Cuisine  
Royal Palace: French Dinner  
Dining Times: 5:45 p.m. & 8:15 p.m.

### DRINK OF THE DAY

Bahama Mama (Alcoholic)  
Coco Bali (Non Alcoholic)

### WEATHER FORECAST

Saturday: Partly Sunny  
High: 75°F/24°C  
Sunday: Partly Sunny  
High: 73°F/23°C

Evening Attire: Optional Dress Up

## DINING & LOUNGES

### BREAKFAST

CABANAS CONTINENTAL(PORT SIDE)	DECK 11, AFT	7:00 A.M. - 7:30 A.M.
CABANAS	DECK 11, AFT	7:30 A.M. - 10:45 A.M.
ENCHANTED GARDEN	DECK 2, MID	8:00 A.M. - 10:30 A.M.
ROYAL PALACE	DECK 3, MID	8:00 A.M. - 9:30 A.M.

### LUNCH

CABANAS	DECK 11, AFT	12:00 P.M. - 1:30 P.M.
COOKIES BBQ	CASTAWAY CAY	11:30 A.M. - 2:00 P.M.
COOKIES BBQ TOO	CASTAWAY CAY	11:30 A.M. - 2:00 P.M.
FILLMORE'S FAVORITES	DECK 11, MID	11:00 A.M. - 6:00 P.M.
LUIGI'S PIZZA	DECK 11, MID	11:00 A.M. - 6:00 P.M.
TOW MATER'S GRILL	DECK 11, MID	11:00 A.M. - 6:00 P.M.

### DINNER

ANIMATOR'S PALATE	DECK 3, AFT	5:45 P.M. & 8:15 P.M.
ENCHANTED GARDEN	DECK 2, MID	5:45 P.M. & 8:15 P.M.
ROYAL PALACE	DECK 3, MID	5:45 P.M. & 8:15 P.M.
PALO & REMY (18+)	DECK 12, AFT	6:00 P.M. - 9:00 P.M.

(RESERVATION REQUIRED & COVER CHARGE APPLICABLE. DIAL #7-9734)

TOW MATER'S GRILL	DECK 11, MID	6:00 P.M. - 11:00 P.M.
-------------------	--------------	------------------------

### LATE NIGHT SNACKS

LUIGI'S PIZZERIA	DECK 11, MID	9:30 P.M. - 12:00 MID.
------------------	--------------	------------------------

### ADDED FEATURES

BEVERAGE STATION	DECK 11, AFT	24 HOURS
EYE SCREAM	DECK 11, MID	11:00 A.M. - 12:00 MID.
ROOM SERVICE	DIAL 0	CLOSES AT 1:30 A.M.

### ENTERTAINMENT - LOUNGES - BARS

Adults must be 21 and older to consume alcoholic beverages.

687 PUB	DECK 4, AFT	12:00 P.M. - 9:00 P.M.
687 PUB (18+)	DECK 4, AFT	9:00 P.M. - 12:30 A.M.
BON VOYAGE	DECK 3, MID	3:00 P.M. - 11:00 P.M.
COVE BAR (18+)	DECK 11, FWD	11:00 A.M. - 11:00 P.M.
COVE CAFE (18+)	DECK 11, FWD	7:00 A.M. - 12:00 MID.
CURRENTS	DECK 13, FWD	2:00 P.M. - 12:00 MID.
D LOUNGE	DECK 4, MID	SHOWTIMES
DISTRICT LOUNGE	DECK 4, AFT	4:30 P.M. - 9:00 P.M.
DISTRICT LOUNGE (18+)	DECK 4, AFT	9:00 P.M. - 12:00 MID.
EVOLUTION (18+)	DECK 4, AFT	10:00 P.M. - 2:00 A.M.
FROZONE TREATS	DECK 11, MID	11:00 A.M. - 11:00 P.M.
MERIDIAN (18+)	DECK 12, AFT	5:00 P.M. - 12:30 A.M.
OUTLOOK	DECK 14, MID	SUNSET TIMES
PINK (18+)	DECK 4, AFT	5:00 P.M. - 12:30 A.M.
SKYLINE (18+)	DECK 4, AFT	5:00 P.M. - 12:00 MID.
VISTA CAFE	DECK 4, MID	7:30 A.M. - 11:00 P.M.
WAVES	DECK 12, AFT	3:00 P.M. - 7:00 P.M.

### CASTAWAY CAY BARS

CONCHED OUT BAR	CASTAWAY CAY	9:30 A.M. - 4:00 P.M.
CASTAWAY AIR BAR	CASTAWAY CAY	9:30 A.M. - 3:30 P.M.
HEADS UP BAR	CASTAWAY CAY	10:00 A.M. - 3:30 P.M.
SAND BAR	CASTAWAY CAY	10:30 A.M. - 3:30 P.M.

Consumers who order raw or partially cooked, ready-to-eat food of animal origin, are hereby informed that the food is not sufficiently cooked to ensure its safety.

### IMPORTANT NUMBERS

Fire/Security:	7-3001
Medical EMERGENCY:	7-3000
Health Center:	7-1923

All Ashore:  
Approx. 8:30 a.m.

All Aboard:  
5:00 p.m.